



Limbe Wildlife Centre Cameroon

COMMUNITY GREEN PROJECT ANNUAL REPORT 2024





Limbe Wildlife Centre: Community-Based Green Project 2024

Cover page: community members off-loading greens and Arno enjoying his Aframomum (© Reni Jantek)

Published in **April 2024**

Limbe Wildlife Centre, P.O. Box 878, Limbe, Republic of Cameroon



Limbe Wildlife Centre is a collaborative effort between the Pandrillus Foundation and the Republic of Cameroon, Ministry of Forestry and Wildlife (MINFOF)



The Ministry of Forestry and Wildlife oversees implementing the national forest policy for ensuring sustainable management and conservation of wildlife and biodiversity over the national territory as enacted by forestry law No. 01/94 of 20 February which regulates all forestry, wildlife, and fisheries activities



Pandrillus Cameroon is a non-profit making NGO specialised in the protection, rehabilitation, and reintroduction of primates, as well as management and sustainable financing of conservation projects in Africa



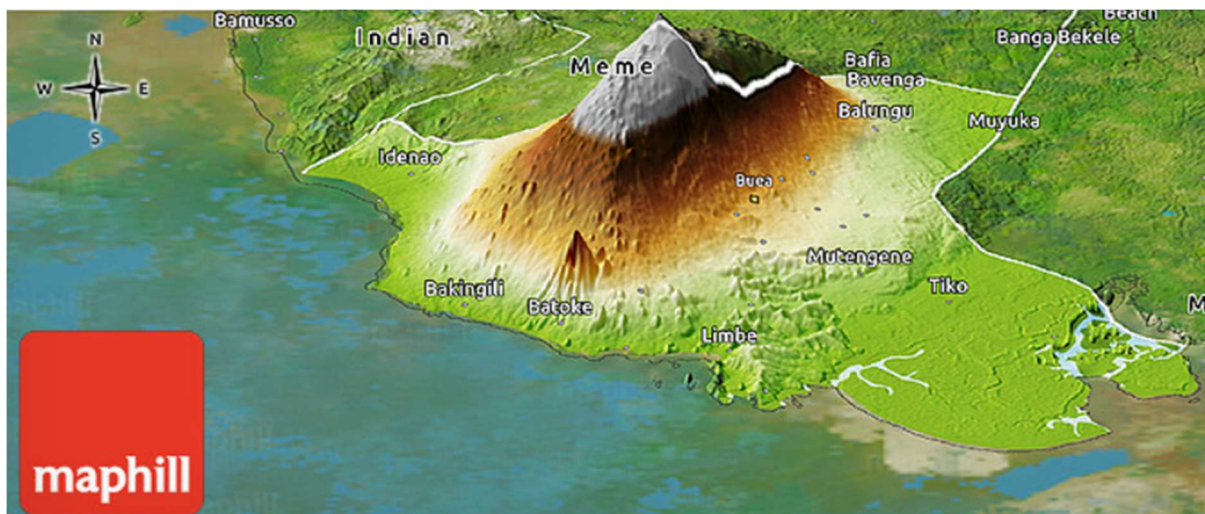


Our Green Project institutional funders 2024



Project summary

Communities are central to the conservation approach of the Limbe Wildlife Centre. Although community members are largely responsible for the depletion of wildlife populations and forest encroachment around Mount Cameroon National Park, it is mostly because of a lack of alternative sources of income and understanding. For years, the Limbe Wildlife Centre, through Pandrillus and with the support of many international donors, has run the Green Project to benefit the local community and flora and fauna around Mount Cameroon National Park, as well as the rescue animals at the LWC. To reduce the need for farmland expansion and bushmeat hunting within Batoke, which is found at the foot of the mountain, the project began purchasing green cultivated and wild-harvested products from community members. The community-based project aims to encourage more sustainable management of natural resources by financially supporting the community through purchasing harvested greens that sustainably feed and nurture the wildlife at the centre and increasing land value and reducing forest encroachment by purchasing crop by-products.



Map of Fako division of the South-West region, with the village of Batoke lying at the foot of Mount Cameroon

Objectives

Reducing bushmeat hunting and slash-and-burn culture

The alternative livelihoods provided by the Green Project means that community members are less reliant on bushmeat hunting. The Green Project increases the value of the agricultural land, as the project buys agricultural by-products (crop leaves) which are not used for human consumption. This reduces the need to expand agricultural lands through slash-and-burn culture, thus protecting the forest and its wildlife.

Providing sustainable and nutritious food for our rescued animals

With nearly 200 primates to feed (and small mammals and birds), it is important to have a constant supply of fresh, nutritious, and sustainable food. The Green Project allows the LWC to keep its environmental impact low, whilst also providing food that is high in fibre, vitamins, and minerals. Papaya leaves, for example, are good for overall health, improving digestion, have anti-inflammatory properties, and boosts immunity.

Supporting the community through a reliable income

The difficulties faced by the community through the pandemic and the ongoing civil crisis in the South-West region means that a reliable income is more essential than ever. The income generated for the local community is divided up amongst the permanent members. This ensures more financial independence for the women in the community and a better life for their children, and an alternative income for ex-hunters. The fruitful alternative livelihoods will help the development of the community and the ongoing success of the project.

In the last three years (2022-2024), the LWC has contributed \$59,342 to the Batoke community through the Green Project.

The rescued animals at the LWC benefit from the provision of daily fresh browse, full of vitamins and minerals that promote a strong immune system and good health.



Indicators of success

Table 1. Weight and cost of each food item per year

Products	2024	
	Weight (kg)	Costs (XAF)
Crop by-products		
Cassava leaves	11,389	911,120
Papaya leaves	42,938	3,435,040
Potato leaves	27,005	1,620,300
Subtotal Crop by-products	81,332	5,966,460
Wild herbaceous		
Aframomum sp.	32,595	4,615,134
Costus sp.	8,259	412,950
Subtotal Wild herbaceous	40,854	5,028,084
Invasive plants		
Trumpet wood	1,070	48,150
Subtotal Invasive plants	1,070	48,150
Total USD*	123,256	11,042,694
NB permanent members		90
Ex-hunters		15
Women		75
Average total income per week		211,343
Average income per permanent member		122,697
Equivalent number of monthly salaries (XAF60k each)		184
Equivalent monthly salaries per member		2.0

*610 XAF = 1 USD

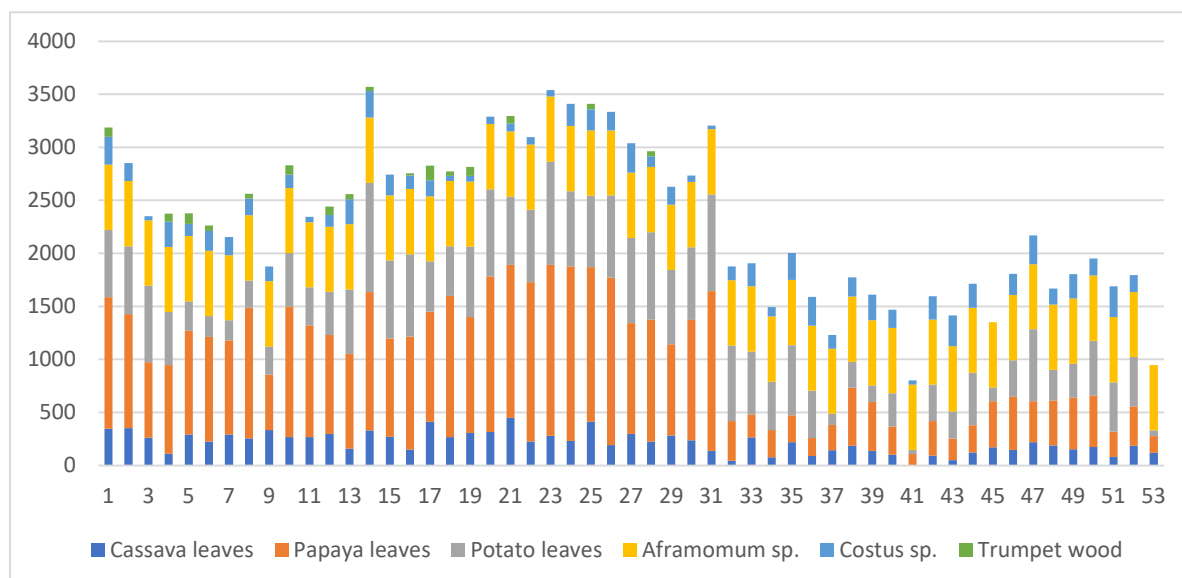


Figure 1. Amount (kg) of green leaves provided to the LWC in 2024

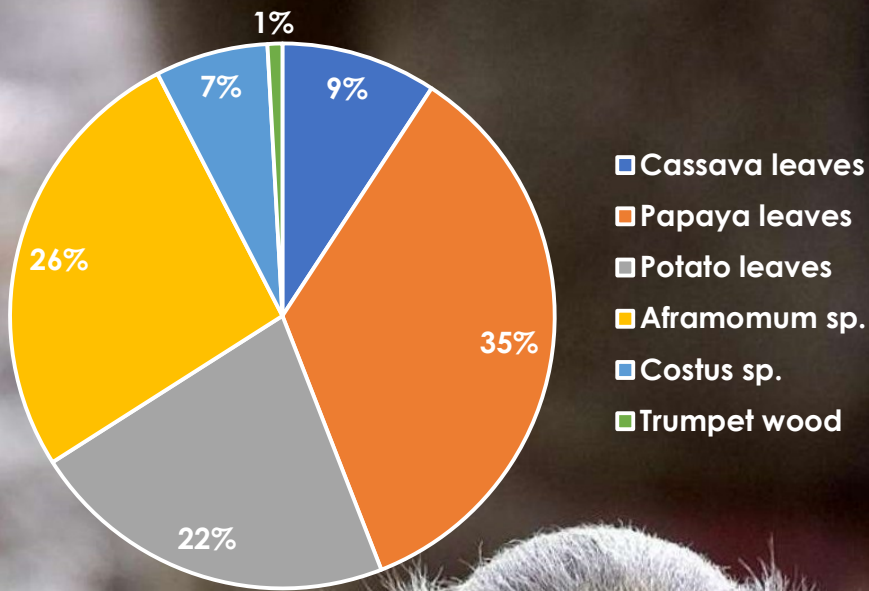


Figure 2. Contribution of each browse item to the revenue generated for the community in 2024

The project continues to support the community to the extent that Green Project members are making 2.0x the average monthly salary, allowing for the empowerment, emancipation and financial independence of women and securing the investment in their children's education and healthcare.



Animals benefitting from the Green Project

Table 2. Species list of resident animals at the LWC that benefit from the Green Project (as of 31st of December 2024)

Common Name	Number of individuals	CITES status	CMR status	IUCN Status
Olive baboon	7	App II	C	LC
Drill	64	App I	A	EN
Moustached monkey	1	App II	C	LC
Red eared guenon	2	App II	A	VU
Mona monkey	11	App II	C	NT
Western lowland gorilla	14	App I	A	CR
Putty nosed guenon	5	App II	C	NT
Preuss' guenon	2	App II	A	EN
Tantalus monkey	12	App II	C	LC
Patas monkey	6	App II	C	NT
Chimpanzee	35	App I	A	EN
Mandrill	10	App II	A	VU
Red capped mangabey	8	App II	A	EN
Agile mangabey	3	App II	A	LC
African civet	1	App III	B	LC
Bay duiker	1	App II	B	NT
Bushbuck	2			LC
Other birds and reptiles	174			

In 2024, 123,256kg of fresh greens were fed to the ~350 animals in rehabilitation at the Limbe Wildlife Centre.





The benefits of fresh greens

Crop by-products

Cassava, papaya and potato leaves are harvested in existing crop fields. As leaves are by-products with no economic value for human consumption, purchasing them brings additional incomes to the villagers while not increasing the workload, and therefore is considered as a **low-cost lucrative activity**.



Papaya leaves have great health benefits, and recent studies have shown that they may:

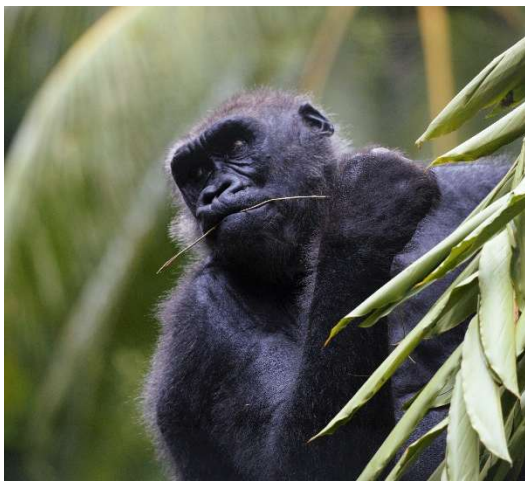
- Improve digestive function
- Have anti-inflammatory effects
- Support hair growth
- Promote healthy skin
- Have anticancer properties
- Promote balanced blood sugar

Wild herbaceous plants (*Aframomum* and *Costus* sp).

These plants are members of the wild ginger family and have medicinal properties that boost the health and immune system of our animals.

Trumpet tree

The **trumpet tree (*Cecropia peltate*)** is listed as one of the **100 'World's Worst' invaders** on the **Global Invasive Species Database**, as it is a fast-growing, short-lived tree which may be competing with (or even replacing) native pioneer species.



Tinu, one of our rescued western lowland gorillas, enjoying fresh Aframomum.



Each day our drills receive a variety of crop by products such as cassava and potato leaves.



Financial breakdown

Table 3. Financial breakdown for 2024

Categories 2024	XAF	USD	EURO
Labour costs	3,077,208	5,045	4,691
Community suppliers	11,042,694	18,103	16,834
Gasoil	2,623,050	4,300	3,999
Outreach programme	0	0	0
LWC Vehicle maintenance	1,954,170	3,204	2,979
Fixed costs	1,308,799	2,146	1,995
TOTAL Project	20,005,921	32,797	30,499

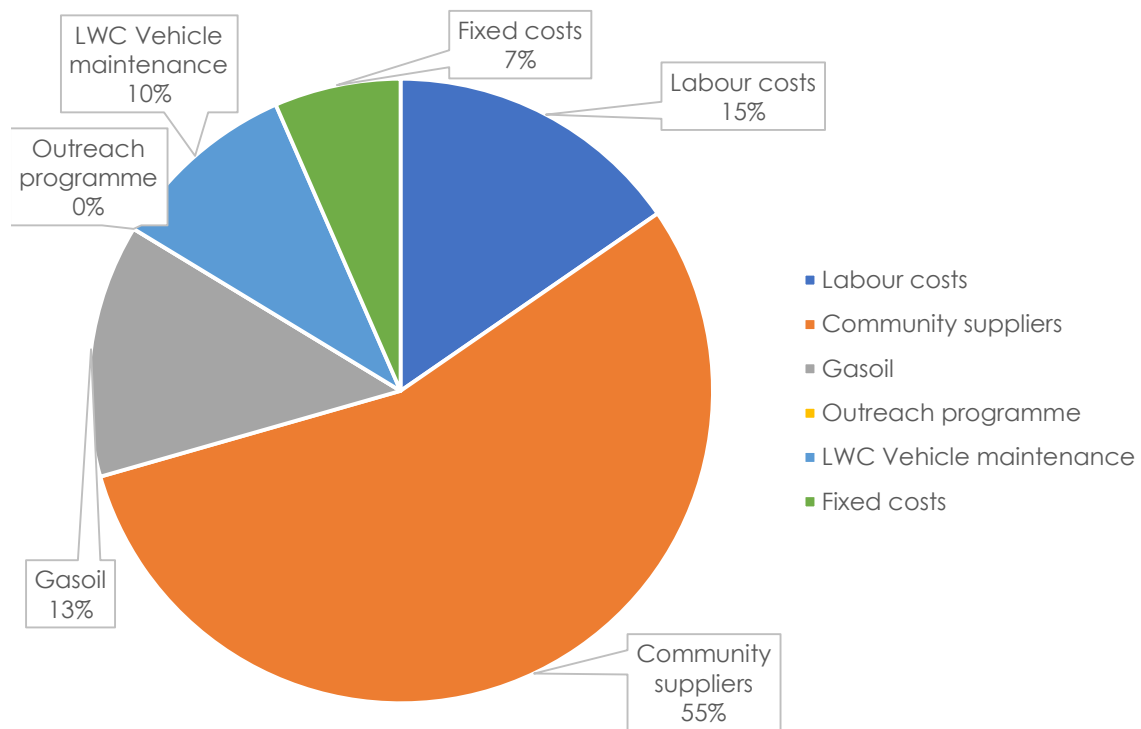
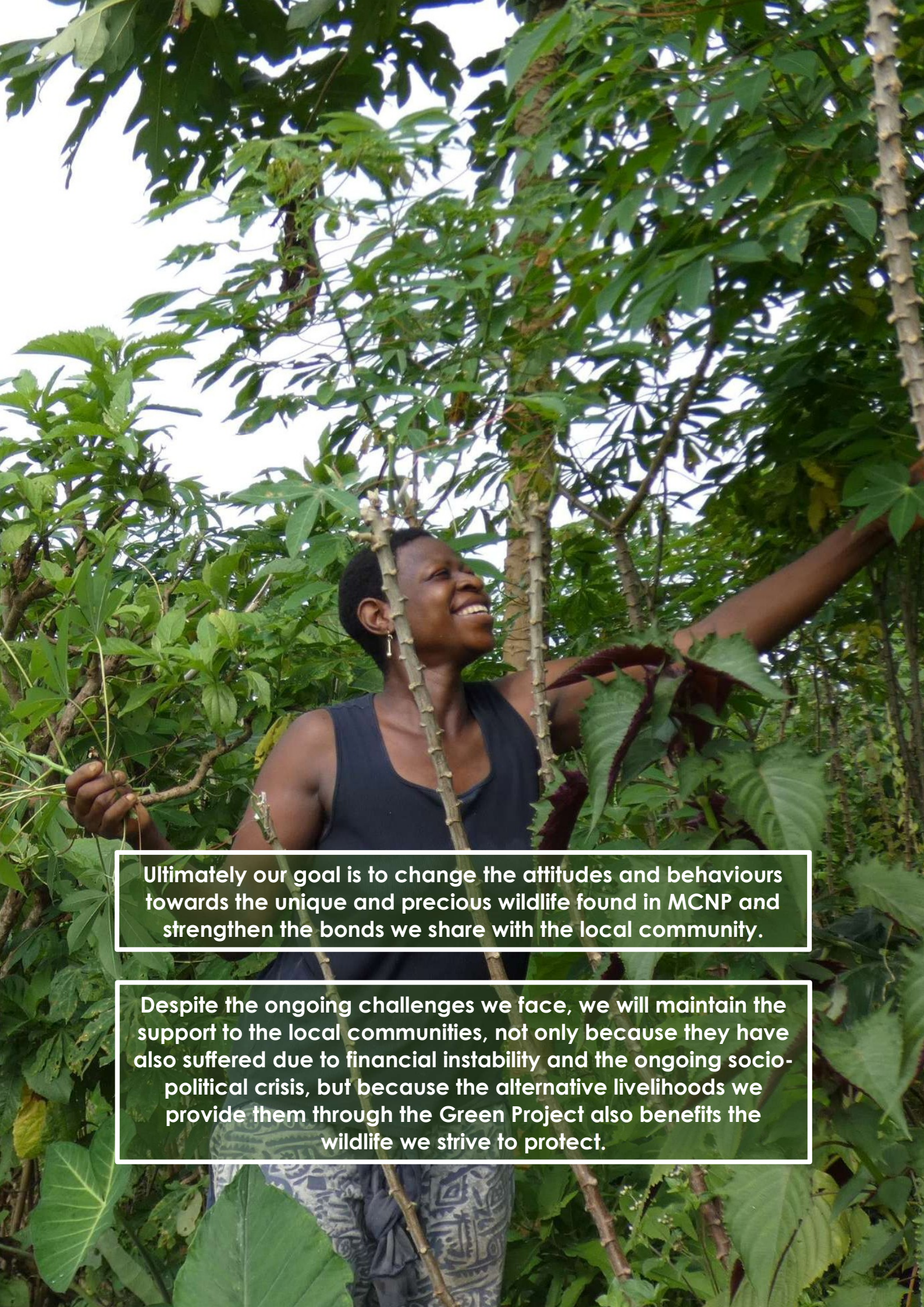


Figure 3. Financial breakdown for 2024

A woman with short dark hair, wearing a dark blue tank top and patterned pants, is smiling and looking upwards in a dense, green forest. She is holding a long, thin branch in her right hand. The background is filled with various types of trees and foliage, creating a vibrant and natural setting.

Ultimately our goal is to change the attitudes and behaviours towards the unique and precious wildlife found in MCNP and strengthen the bonds we share with the local community.

Despite the ongoing challenges we face, we will maintain the support to the local communities, not only because they have also suffered due to financial instability and the ongoing socio-political crisis, but because the alternative livelihoods we provide them through the Green Project also benefits the wildlife we strive to protect.



Projected budget for 2025

Table 4. Projected budget and breakdown for 2025

Categories 2025 Forecast	XAF	USD	EURO
Labour costs	3,231,068	5,341	4,925
Community suppliers	11,594,829	19,165	17,675
Gasoil	2,754,203	4,552	4,198
Outreach programme	800,000	1,322	1,220
LWC Vehicle maintenance	2,051,879	3,392	3,128
Fixed costs	1,374,238	2,271	2,095
TOTAL Project	21,806,217	36,043	33,241

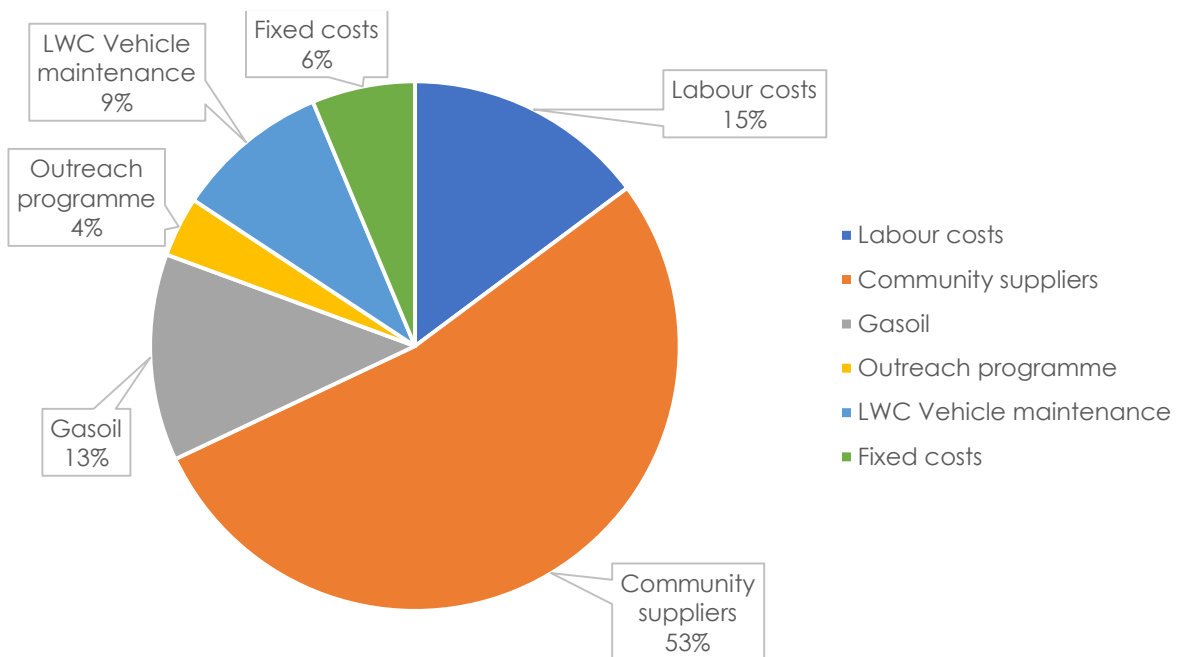


Figure 4. Projected budget and breakdown for 2025