



Limbe

Wildlife Centre

Cameroon

COMMUNITY GREEN PROJECT ANNUAL REPORT 2023





Limbe Wildlife Centre: Community-Based Green Project 2023

Cover page: papaya leaves and western lowland gorilla, Atimbe, in the rain with her Aframomum leaves (© Laurent Marol and Maiwen Bigey)

Published in **June 2024**

Limbe Wildlife Centre, P.O. Box 878, Limbe, Republic of Cameroon



Limbe Wildlife Centre is a collaborative effort between the Pandrillus Foundation and the Republic of Cameroon, Ministry of Forestry and Wildlife (MINFOF)



The Ministry of Forestry and Wildlife oversees implementing the national forest policy for ensuring sustainable management and conservation of wildlife and biodiversity over the national territory as enacted by forestry law No. 01/94 of 20 February which regulates all forestry, wildlife, and fisheries activities



Pandrillus Foundation is a non-profit making NGO specialised in the protection, rehabilitation, and reintroduction of primates, as well as management and sustainable financing of conservation projects in Africa



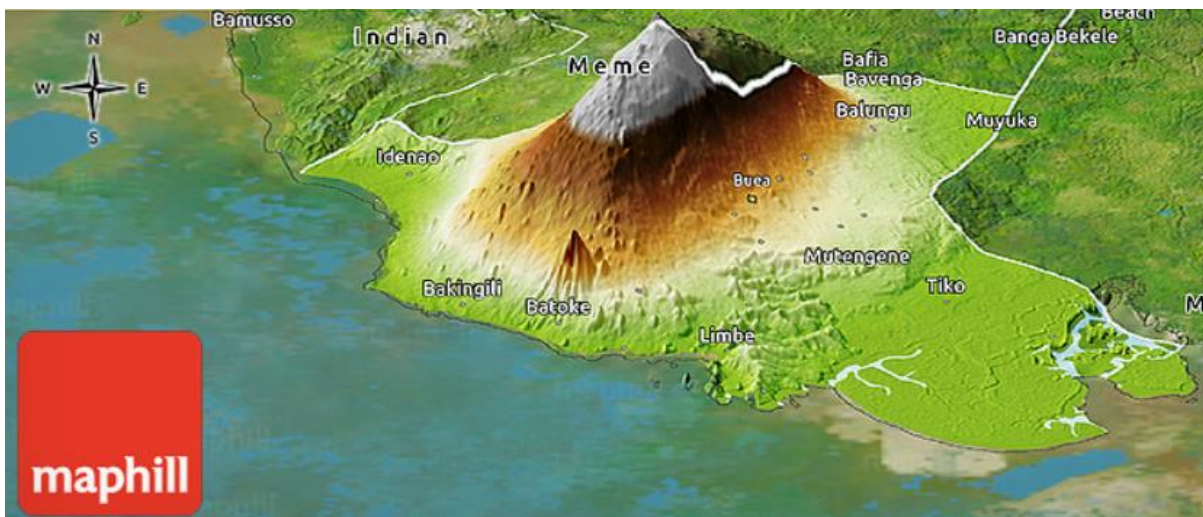


Our Green Project institutional funders 2023



Project summary

Communities are central to the conservation approach of the Limbe Wildlife Centre. Although community members are largely responsible for the depletion of wildlife populations and forest encroachment around Mount Cameroon National Park, it is mostly because of a lack of alternative sources of income and understanding. For years, the Limbe Wildlife Centre, through Pandrillus and with the support of many international donors, has run the Green Project to benefit the local community and flora and fauna around Mount Cameroon National Park, as well as the rescue animals at the LWC. To reduce the need for farmland expansion and bushmeat hunting within Batoke, which is found at the foot of the mountain, the project began purchasing green cultivated and wild-harvested products from community members. The community-based project aims to encourage more sustainable management of natural resources by financially supporting the community through purchasing harvested greens that sustainably feed and nurture the wildlife at the centre and increasing land value and reducing forest encroachment by purchasing crop by-products.



Map of Fako division of the South-West region, with the village of Batoke lying at the foot of Mount Cameroon

Objectives

Reducing bushmeat hunting and slash-and-burn culture

The alternative livelihoods provided by the Green Project means that community members are less reliant on bushmeat hunting. The Green Project increases the value of the agricultural land, as the project buys agricultural by-products (crop leaves) which are not used for human consumption. This reduces the need to expand agricultural lands through slash-and-burn culture, thus protecting the forest and its wildlife.

Providing sustainable and nutritious food for our rescued animals

With nearly 200 primates to feed (and small mammals and birds), it is important to have a constant supply of fresh, nutritious, and sustainable food. The Green Project allows the LWC to keep its environmental impact low, whilst also providing food that is high in fibre, vitamins, and minerals. Papaya leaves, for example, are good for overall health, improving digestion, has anti-inflammatory properties, and boosts immunity.

Supporting the community through a reliable income

The difficulties faced by the community through the pandemic and the ongoing civil crisis in the South-West region means that a reliable income is more essential than ever. The income generated for the local community is divided up amongst the permanent members. This ensures more financial independence for the women in the community and a better life for their children, and an alternative income for ex-hunters. The fruitful alternative livelihoods will help the development of the community and the ongoing success of the project.

In the last three years, the LWC has contributed \$62,842 to the Batoke community through the Green Project.

The rescued animals at the LWC benefit from the provision of daily fresh browse, full of vitamins and minerals that promote a strong immune system and good health.



Indicators of success

Table 1. Weight and cost of each food item per year

Products	2023	
	Weight (kg)	Costs (XAF)
Crop by-products		
Cassava leaves	12,906	1,032,480
Papaya leaves	49,649	3,971,920
Potato leaves	29,430	1,765,800
Subtotal Crop by-products	91,985	6,770,220
Wild herbaceous		
Aframomum sp.	31,980	4,525,326
Costus sp.	6,933	346,650
Subtotal Wild herbaceous	38,913	4,871,976
Invasive plants		
Trumpet wood	2,968	133,560
Subtotal Invasive plants	2,968	133,560
Total USD*	133,866	11,775,736
NB permanent members		90
Ex-hunters		15
Women		75
Average total income per week		225,373
Average income per permanent member		130,842
Equivalent number of monthly salaries (XAF60k each)		196
Equivalent monthly salaries per member		2.2

*608 XAF = 1 USD

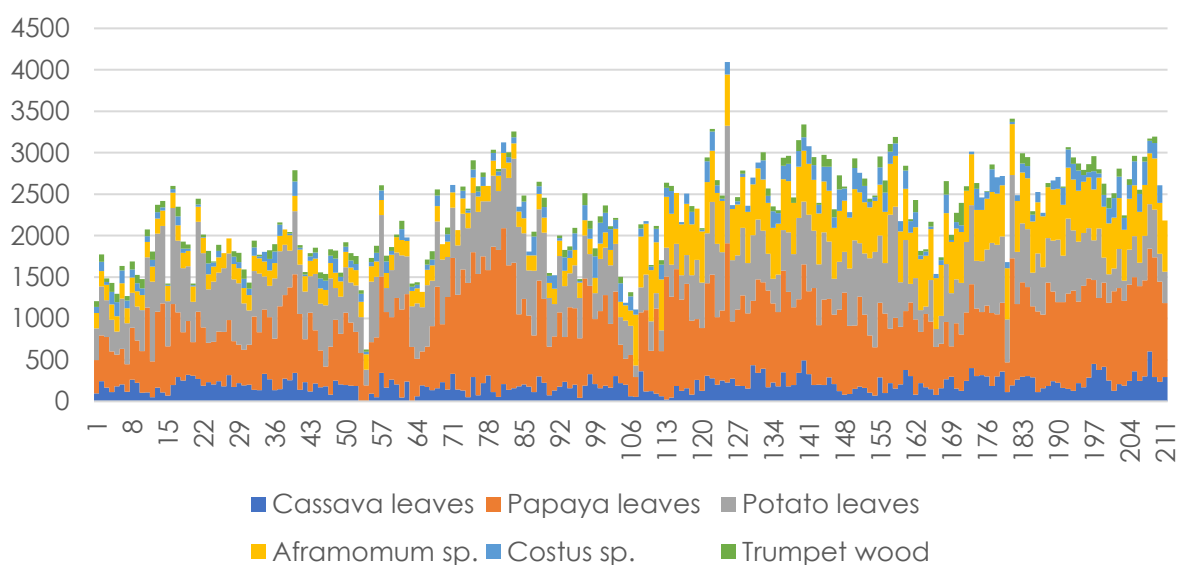


Figure 1. Increase of amount (kg) of food enrichment provided by the community of Batoke each week since January 2020 until the last week of 2023.

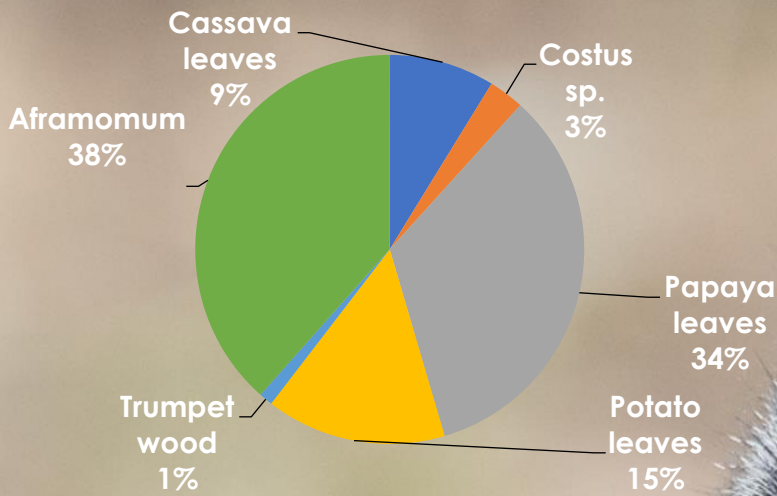


Figure 2. Contribution of each browse item to the revenue generated for the community in 2023

The project continues to support the community to the extent that Green Project members are making 2.2x the average monthly salary, allowing for the empowerment, emancipation and financial independence of women and securing the investment in their children's education and healthcare.





Animals benefitting from the Green Project

Table 2. Species list of resident animals at the LWC that benefit from the Green Project

Common Name	Number of individuals	CITES status	CMR status	IUCN Status
Olive baboon	7	App II	C	LC
Drill	67	App I	A	EN
Moustached monkey	1	App II	C	LC
Red eared guenon	3	App II	A	VU
Mona monkey	13	App II	C	NT
Western lowland gorilla	14	App I	A	CR
Putty nosed guenon	5	App II	C	NT
Preuss' guenon	2	App II	A	EN
Tantalus monkey	11	App II	C	LC
Patas monkey	4	App II	C	NT
Chimpanzee	38	App I	A	EN
Mandrill	10	App II	A	VU
Red capped mangabey	7	App II	A	EN
Agile mangabey	3	App II	A	LC
African civet	1	App III	B	LC
Bay duiker	1	App II	B	NT
Bushbuck	3			LC

In 2023, 133,866kg of fresh greens were fed to the ~250 animals in rehabilitation at the Limbe Wildlife Centre.





The benefits of fresh greens

Crop by-products

Cassava, papaya and potato leaves are harvested in existing crop fields. As leaves are by-products with no economic value for human consumption, purchasing them brings additional incomes to the villagers while not increasing the workload, and therefore is considered as a **low-cost lucrative activity**.



Papaya leaves have great health benefits, and recent studies have shown that they may:

- Improve digestive function
- Have anti-inflammatory effects
- Support hair growth
- Promote healthy skin
- Have anticancer properties
- Promote balanced blood sugar

Wild herbaceous plants (*Aframomum* and *Costus* sp).

These plants are members of the wild ginger family and have medicinal properties that boost the health and immune system of our animals.

Trumpet tree

The **trumpet tree (*Cecropia peltate*)** is listed as one of the **100 'World's Worst' invaders** on the **Global Invasive Species Database**, as it is a fast-growing, short-lived tree which may be competing with (or even replacing) native pioneer species.



Twiggs, our disabled female western lowland gorilla, enjoying *Aframomum* leaves.



Our drills receive trumpet tree leaves as they encourage natural foraging behaviours which reduce group tensions.



Community workshops and meetings

The LWC hosted its **annual Green Project workshop in Batoke village on July 27th, 2023**. The LWC has been working with the community for over 15 years to conserve wildlife and forests, alleviate poverty, and improve animal welfare.



The workshop highlighted the importance of conservation efforts and the benefits of the project for rescued animals. It also provided an opportunity for the community to give feedback on project development and improvement. The event featured videos and pictures showcasing the project's impact on wildlife conservation, and emphasized the importance of reducing bushmeat hunting and zoonotic diseases.

The LWC's Education Team delivered a presentation on zoonotic diseases and associated risks as part of our participation in the **Transnational African Zoonoses Education Campaign**, which was well-received by the community. Despite heavy rain, the workshop had significant community participation and was considered a success. A hot meal was served to celebrate the day, and plans are already underway for future workshops.

Members of the Green Project were also invited to attend the **LWC's 30th anniversary event on December 9th**. LWC organised transport for members to come to Limbe to enjoy the celebration, be further sensitised about zoonoses, and share food and drink with the staff and special guests, such as the **Senior Division Officer of Fako**, the **City Mayor of Limbe**, and the **British High Commissioner, Mr Barry Lowen**.





Financial breakdown

Table 3. Financial breakdown for 2023

Categories 2023	XAF	USD*	EURO**
Labour costs	2,633,400	4,331	4,014
Community suppliers	11,775,736	19,367	17,950
Gasoil	2,375,550	3,907	3,621
Outreach programme	250,000	411	381
LWC Vehicle maintenance	2,389,140	3,929	3,641
Fixed costs	1,359,668	2,236	2,072
TOTAL Project	20,783,494	34,183	31,682

*608 XAF = 1 USD

**656 XAF = 1 EUR

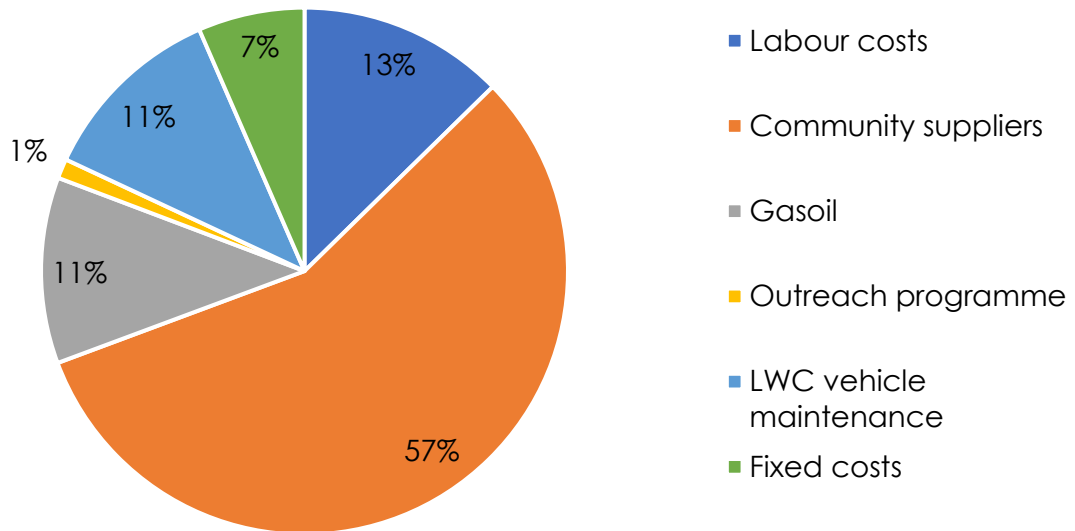


Figure 3. Financial breakdown for 2023



Ultimately our goal is to change the attitudes and behaviours towards the unique and precious wildlife found in MCNP and strengthen the bonds we share with the local community.

Despite the ongoing challenges we face, we will maintain the support to the local communities, not only because they have also suffered due to financial instability and the ongoing socio-political crisis, but because the alternative livelihoods we provide them through the Green Project also benefits the wildlife we strive to protect.



Projected budget for 2024

Table 4. Projected budget and breakdown for 2024

Categories 2024 Forecast	XAF	USD*	EURO**
Labour costs	2,896,740	4,416	4,764
Community suppliers	11,902,000	18,143	19,576
Gasoil	2,613,105	3,983	4,298
Outreach programme	800,000	1,220	1,316
LWC Vehicle maintenance	2,628,054	4,006	4,322
Fixed costs	1,458,793	2,224	2,399
TOTAL Project	22,298,692	33,992	36,675

*608 XAF = 1 USD

**656 XAF = 1 EUR

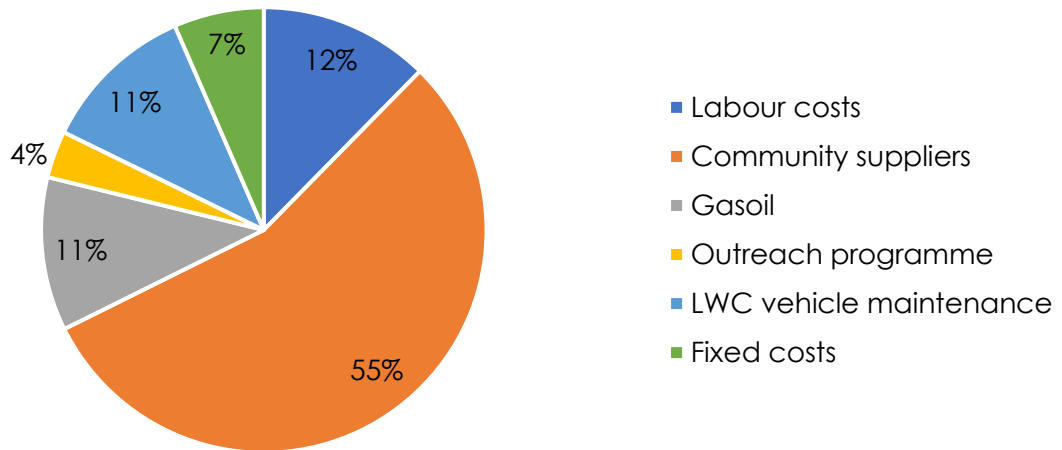


Figure 4. Projected budget and breakdown for 2024